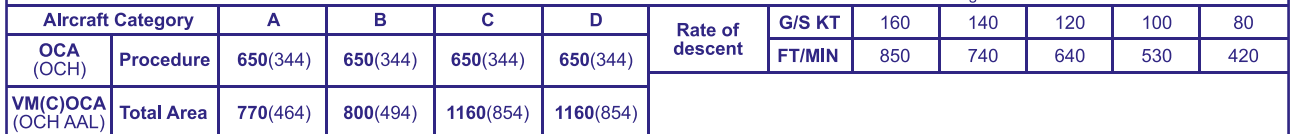
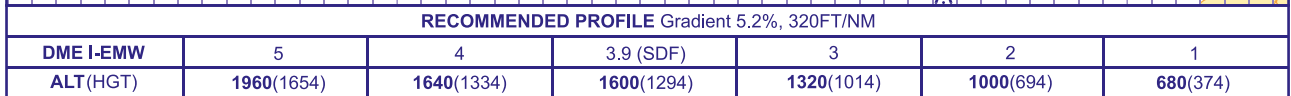


**EAST MIDLANDS**  
**LOC/DME/NDB(L)**  
**RWY 09**  
(ACFT CAT A,B,C,D)



From overhead NDB(L) EMW **not below 3000**(2694) fly outbound on NDB(L) EMW QDR 248° (CAT A,B); NDB(L) EMW QDR 231° (CAT C,D), descending to **not below 2000**(1694). At I-EMW DME 8.2 baseturn right to intercept LOC. Once established on the LOC continue as for main procedure.

**NOTE** 1 Lowest altitude to commence procedure from hold is **3000**.  
2 Aircraft will normally be required to hold not lower than **3000**.

**CHANGE (3/25):** PAGE NUMBER REVISED. MINIMA REVISED. MSA, MOCA, SDF REVISED. TIMING TABLE REMOVED. NO DME PROCEDURE NOW ON SEPARATE CHART.